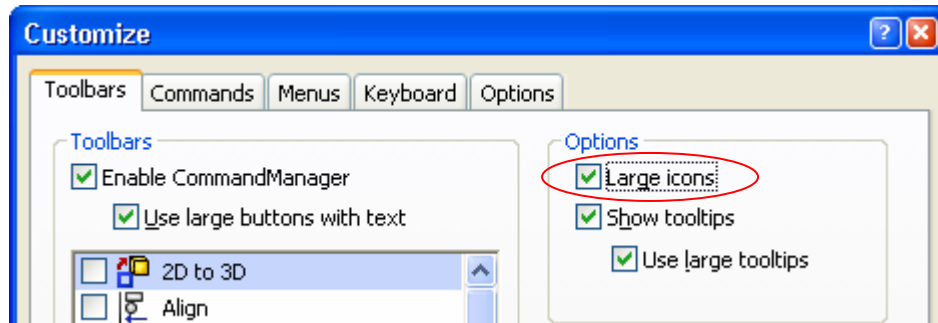


Icon Size and Tooltip Display Options

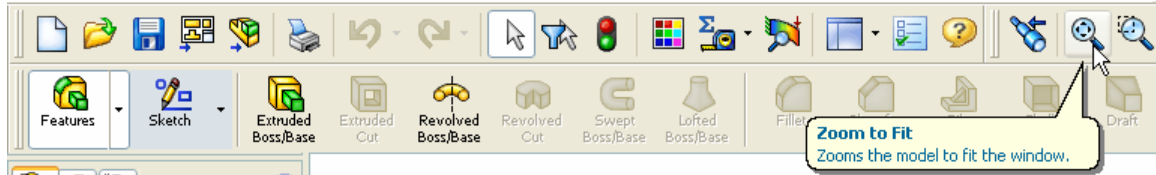
To change the settings for icon size and tooltips, pull down the “Tools” menu and pick **Customize**, or right click on a toolbar and pick **Customize** from the bottom of the menu.

In the **Customize** dialog box, on the **Toolbars** tab, there are some check boxes in the upper right corner. Check the **Large icons** check box.

Make sure that **Show tooltips** and **Use large tooltips** are checked, and then click **OK**. Note that **Use large tooltips** is only available when **Show tooltips** is checked.



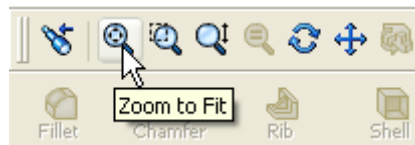
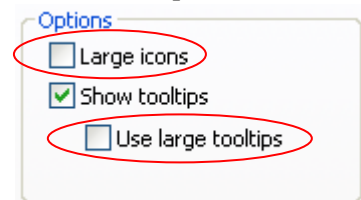
The toolbars and buttons are now much larger in the SolidWorks window. When you place the cursor over the toolbar buttons, tooltips appear that display the name of the tool button and a brief description of its functionality. The large buttons are great when you have a very high resolution monitor.



Pull down the “Tools” menu and pick **Customize**, or right click on a toolbar and pick **Customize**.

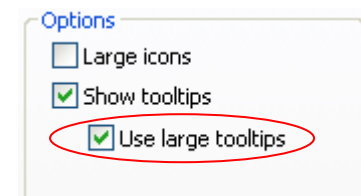
Uncheck **Large icons** and **Use large tooltips**, and then click **OK**.

Now, when you place the cursor over a toolbar, a small tooltip appears that describes the command that the cursor is over. Note that the large tooltips usually include more information.



Pull down the “Tools” menu and pick **Customize**, or right click on a toolbar and pick **Customize**.

Check **Use large tooltips**, and then click **OK**.

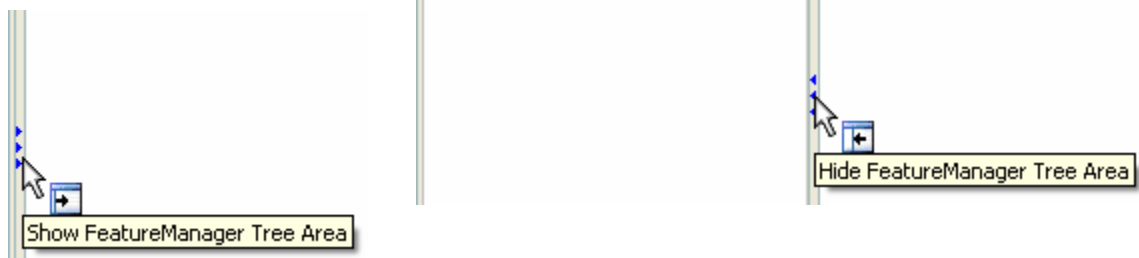


Left Panel Display

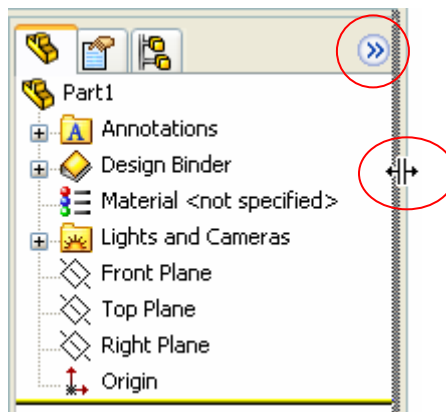
The left panel, by default, includes the FeatureManager design tree, PropertyManager, and ConfigurationManager. You can hide or show this left pane.

Press the **F9** key to hide the left panel, or click the arrow button in the center of the panel border, or pull down the “View” menu and pick **FeatureManager Tree Area**.

Press the **F9** key again to show the left panel, or click the arrow button in the center of the panel border, or pull down the “View” menu and pick **FeatureManager Tree Area**.



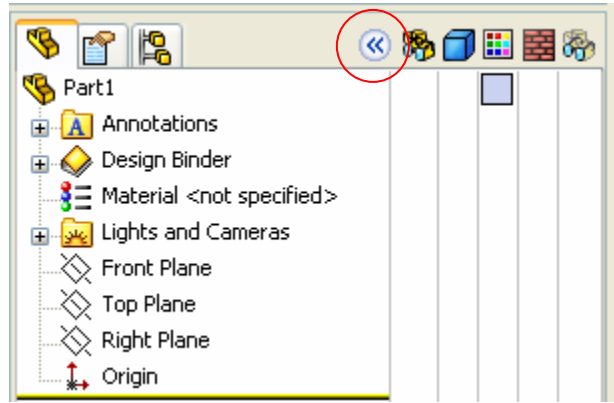
You can also change the size of the left panel at any time. To do this, move the cursor over the panel border. When the cursor changes as shown, press the left mouse button and drag the border to the desired size.



Click the arrow in the upper right corner of the left panel. This shows the Display Pane. In the Display Pane, you can apply the following display settings for each component in an assembly: Hide/Show state, Display mode, Component color, Component texture, and Transparency. In part and drawing documents, you can view this information, but not modify it.



Click the arrow to collapse the Display Pane.



Task Pane Location and Display

The Task Pane allows you to access valuable resources, design libraries, and other files and information. By default, the Task Pane appears on the right hand side of the SolidWorks window.



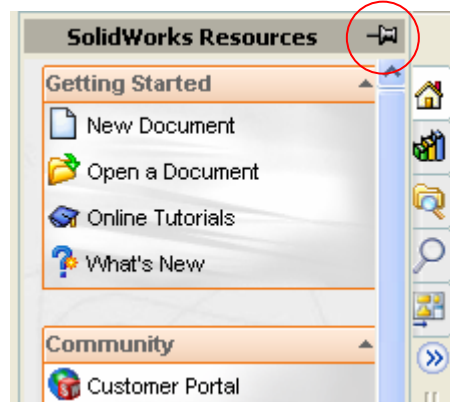
Expand the Task Pane by clicking an arrow or anywhere along the double vertical bar between the arrows.



Collapse the Task Pane by clicking anywhere in the graphics area or by clicking an arrow or anywhere along the double vertical bar between the arrows.



The task Pane closes whenever you click the mouse or perform a command outside of the Task Pane. To keep the Task Pane expanded, expand the Task Pane and click the **Pin** button in the title bar.



Now, when you click anywhere in the graphics area, the Task Pane remains expanded. It does not collapse since it is pinned.



Click the **Pin** button again to unpin the Task Pane, allowing it to collapse.

To float the Task Pane, drag it by the bar between the arrows into the graphics area.

You can resize the floating Task Pane by dragging any edge that is not docked.